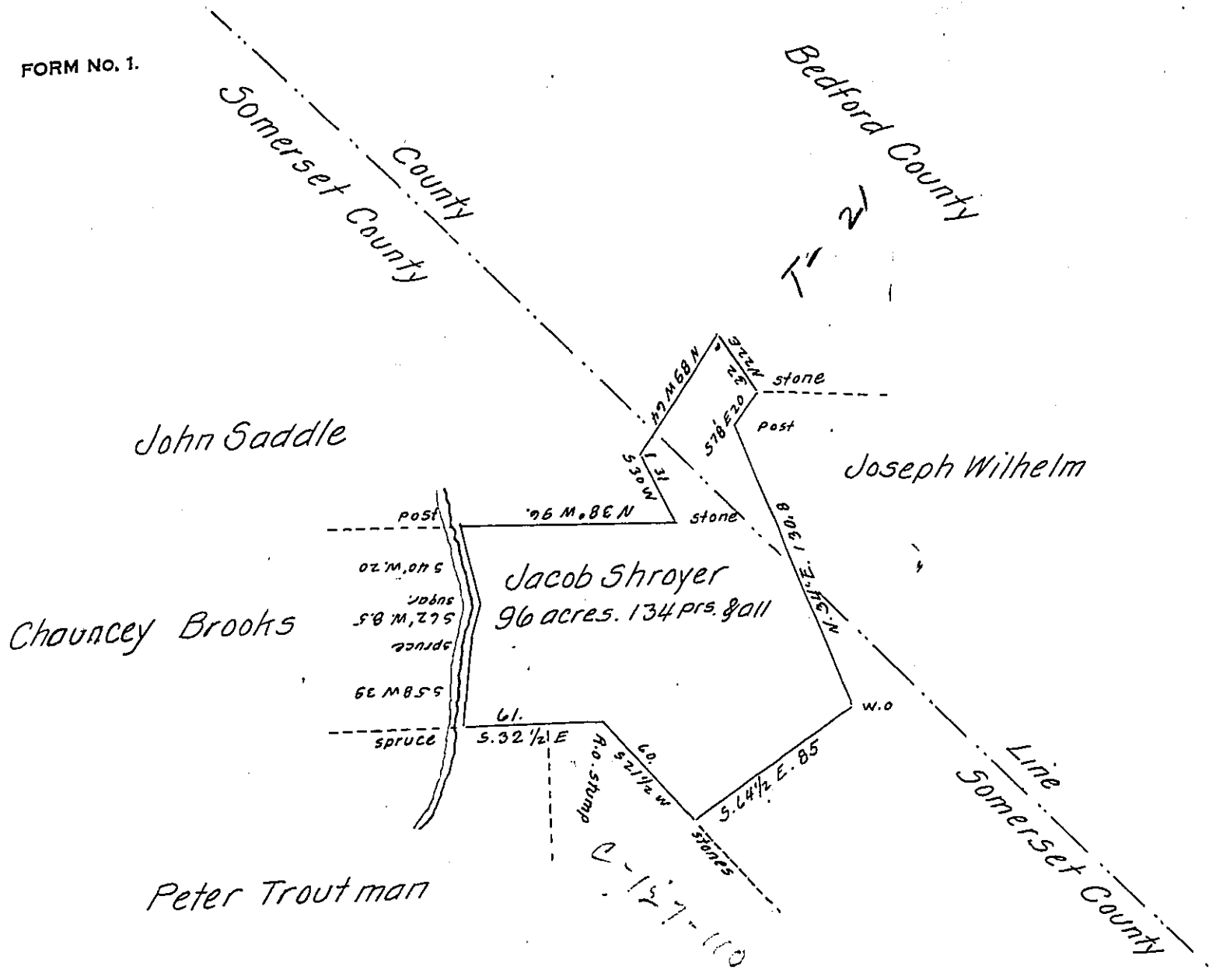


FORM NO. 1.



Draft of a tract of land situated in Londonderry Township Bedford Co. & Southampton Township Somerset County Penna. Containing Ninety six acres. 134 perches and allowance of six per cent for roads &c. Surveyed, calculated, drafted and certified on the 10th day of June A.D. 1871. by Samuel Ketterman then County Surveyor of Bedford County. in pursuance of a warrant dated March 24. 1869. granted to Jacob Shroyer for 300 Acres improved land. Re-surveyed, calculated, drafted and certified on the 16th day of December 1874. by A.D. Colborn then County Surveyor of Somerset Co. I hereby certify that the foregoing is a copy of a Survey filed Amongst the records of the County Survey's office of this County. and that it has been examined by me and found correct.

To W^m. McCandless
 Sec. of Internal Affairs
 Harrisburg Pa.

J. H. Fritz Co. Sur.
 Somerset.
 Pa.

IN TESTIMONY that the above is a copy of the original remaining on file in the Department of Internal Affairs of Pennsylvania, made conformably to an Act of Assembly approved the 16th day of February 1833, I have hereunto set my hand and caused the Seal of said Department to be affixed at Harrisburg, this first day of February 1907.

Isaac B. Brown
 Secretary of Internal Affairs.